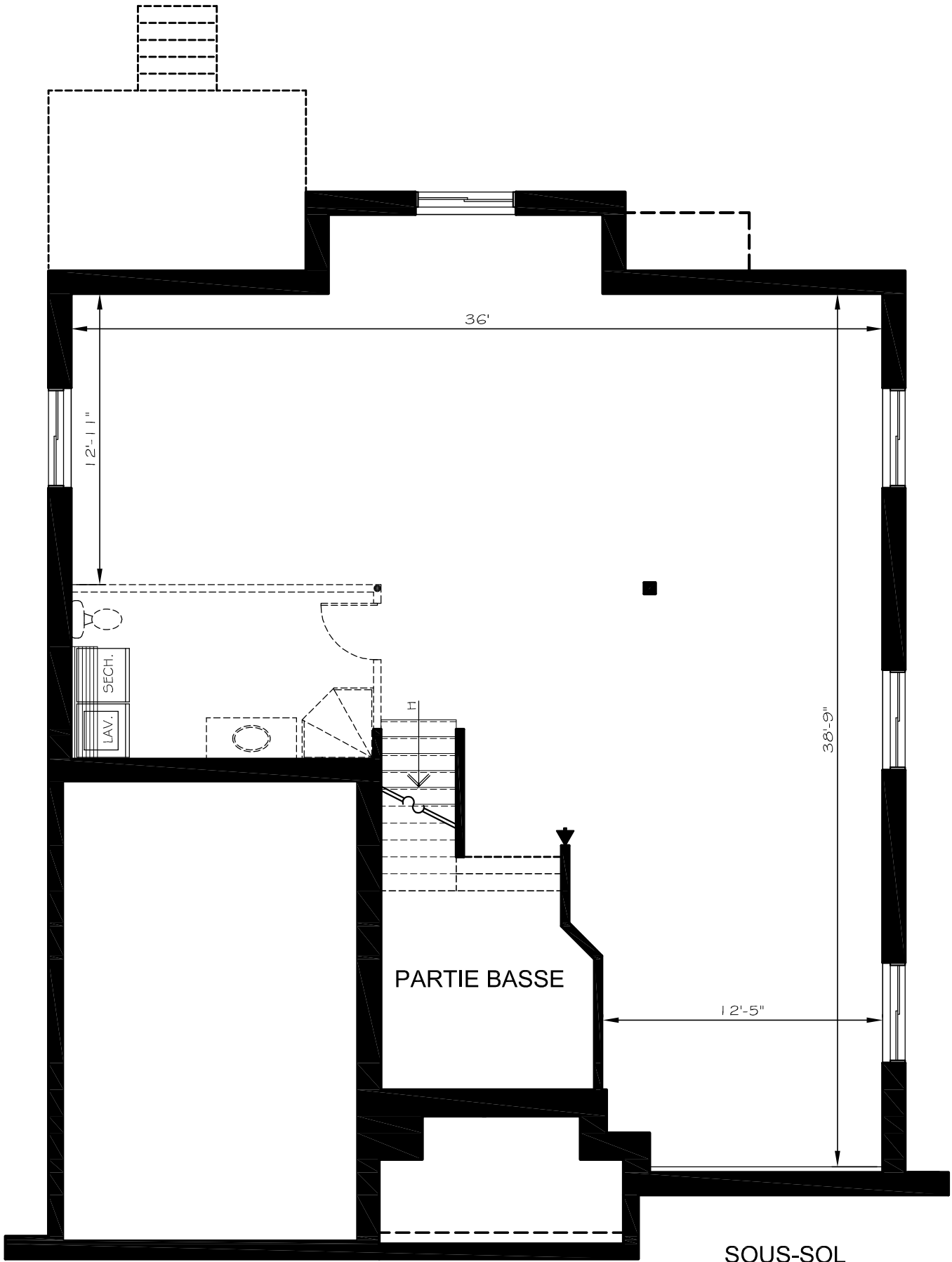


**REZ-DE-CHAUSSEE**  
 SUP. HABITABLE: ± 1 337 pi.ca.  
 SUP. GARAGE: ± 296 pi.ca.  
 SUP. totale: ± 1 633 pi.ca.



36'

12'-1 1/2"

LAV.  
SECH.

1'

38'-9"

PARTIE BASSE

12'-5"

SOUS-SOL